



ALYTA
International Corp.

Processing Equipment



ALYTA
Specialty Products de Mexico SA de CV

www.alytainternational.com

www.alytamexico.com

INDEX

Processing Equipment - HVAC, Automotive, OEM's & Other Industries

- Tube bending, TBM, TBCM, TBCEM, TBCMM
- TCM, TCEM CNC tube chipless cutting machine
- Tube end forming machines
- CNC flute type punching machine
- CNC closing machine with spinning mode
- CNC spinning machine
- Hairpin bender
- Return Bender
- Ring Inserted Machine
- Heat exchanger processing equipments
- Tube expanders
- Shrinkless expander with clamping fixture
- Horizontal combined expander
- Fin Presser

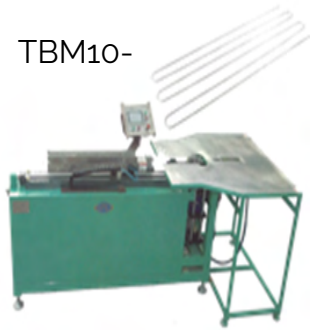


Products

Tube bending, TBM, TBCM, TCEM, TBCMM



TBM10-



TBCM10-

150-R1H



TBM50-

TBM25-R2



TBM25-R2

TBCEM15-R1



TCEM5-2/XP



OPTION	Max process tube dia. (copper)	R:	1:	Null: normal
TBM:	10: 10mm	Right bending	Single die	H:
CNC tube bender	20: 20mm	L:	2:	System customized
TBCM:	25: 25mm	Left bending	Double dies	Q:
CNC tube cutting and bending machine	30: 30mm	RL:	N:	Quick die change
TBCM:	40: 40mm	Right bending and left bending	Multi-dies	A:
CNC integrated machine (cut, end form, bend)	50: 50mm			Auto loading and unloading
TBCMM:	65: 65mm			J:
Machine head rotating integrated machine	80: 80mm			Economic type
	110: 110mm			



Tube bending & integrated



8-12 tubes processed at one time



TBCMM15-R1



TCEM20-2+2/12

Products

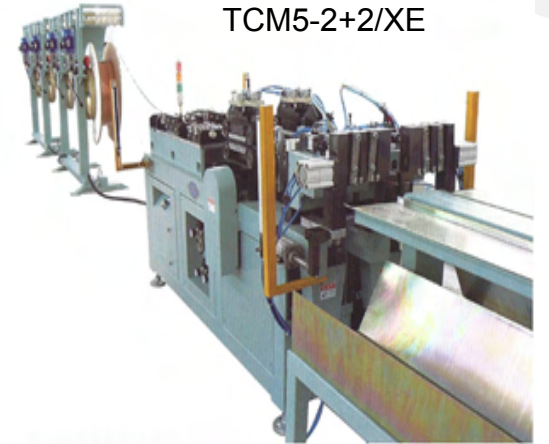
TCM, TCEM CNC tube chipless cutting machine



TCM20-2+2/120



TCM5-2+2/XE



OPTION					
TCM: TCEM	Max process tube diameter	1. Single tube	-		
CNC tube cutting machine	13.13mm	2. Two tubes	Once feeding length 300: 300mm 1200: 1200mm X: Continuous feeding	Decoiler type E: Motorized decoiler Q: Eye-to-sky decoiler P: Passive decoiler	Rotating type decoiler Null: one side rotating 2: Two sides 2R Two sides rotating (one side for use, the other side For preparation)
TCEM:	20.20mm	4: four tubes:	Double dies		
CNC tube cutting and end forming machine	25. 25mm	2+2	N:		
	40: 40mm	Double two tubes	Multi-dies		

Products

Tube end forming machines

TE: Tube and forming machine



Process side	Type	Max process tube diameter	Number of position	Process mode	Null: normal
1:	M;	20.20mm	1:	F:	A:
Single end	CNC spinning machine	30. 30mm	One position	Flinging mode	Auto loading and unloading
2:	K;	40: 40mm	3:	C:	B-Z
Two ends	Expansion and swaging	60.60mm	Three position	Spinning mode	customized
	H;	100. 100mm	N:	L;	
	mixed		Multi-position	lathe	

TE1K30-6



TE1K20-3



TE1K100-



TE1K40-



Products

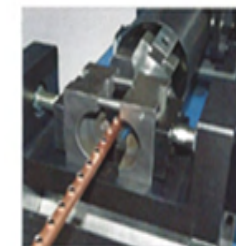
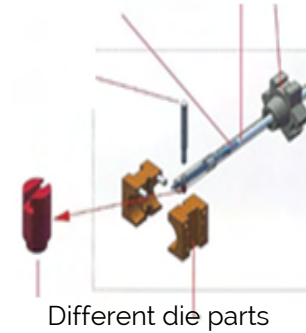
CNC flute type punching machine



TDM80-2000B2



TDA50



CNC flute type	Max process tube diameter	Max process tube length	Control axis
Punching machine	20.20mm	1500: 1500mm	B1;
	50. 50mm	2000: 2000mm	One axis
	80: 80mm	L:	B2;
	80: 80mm	Length customized	Two axes

Products

CNC closing machine with spinning mode



OPTION TE1F:, 1/C TE1F:

CNC closing	Max process tube diameter
Machine with	30 .30mm
Spinning mode	50 50mm
	80. 80mm
	110: 110mm



TE1F80-1/C



Spot welding in the Middle part to seal Up tube completely

Products

CNC spinning machine



TE:, M:, A;	M	A	
TEM:			
CNC spinning machine	Process side	Max process tube diameter	Null: normal
	1: one end	30: 30mm	A:
	2: two ends	50. 50mm	Auto tube - loading/ unloading
		60. 60mm	A2:
		80: 80mm	Auto tube-loading/ unloading
			And ends-changeover



TE1M50-A2

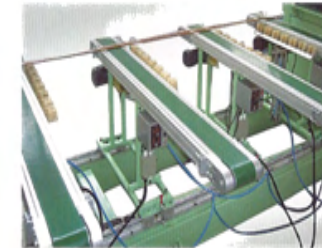
Products

Hairpin bender



OPTION TBLU

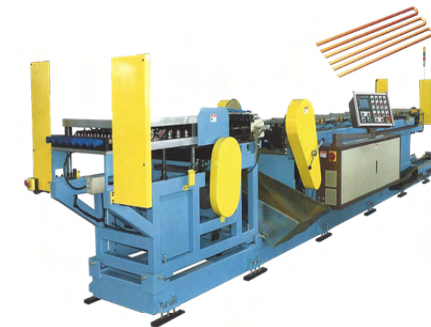
TBLU:	Max process tube diameter:	Number of tube Process at one time	Max process tube length	Number of centres	Decoiler type	Unloading mode
Hairpin bender	5: 5mm	4; 4MM (tubes)	1300mm 3800mm	M1:	E:	Null: pneumatic arm unloading
	7: 7mm	6: 6MM (tubes)	1700mm 4300mm	Single die	Motorized decoiler	A:
	7: 7MM (tubes)	2200mm 5000mm	M2:	Q:	A: belt conveyor unloading
	15:88: 15.88MM	8: 8MM (tubes)	2700mm 6000mm	Double dies	Eye-to-sky decoiler	
		6+6: 12 (tubes)	3200mm			



Automatic conveying tube collector



Copper black Spot detection



TBLU7-8/1300-M2Q



Quick change over between two tube diameters



12 tubes can be Bent at one time



Multi-centres

Products

Return Bender



OPTION TBSU: TBSC

TBSU	Max process tube diameter	Number of tube Process at one time	Max pitch	Decoiler type
Return bender	10. < 10mm	2: 2 (tubes)	Null: standard	E:
TBSC:	20. < 20mm	3: 3 (tubes)	(diameter <10, pitch < 30)	Motorized decoiler
Multi-functional return bender	9.52: 9.52mm	5: 5 (tubes)	(diameter <20, pitch < 50)	Q:
			60: customization (pitch > 50)	Eye-to-sky decoiler
				P:
				Passive decoiler



Motorized decoiler



Eye-to-eye decoiler



TBSU7-5/21Q

Products

Ring Inserted Machine



OPTION TBSU: TBSC

TBSU	Max process tube diameter	Number of tube Process at one time	Max pitch	Decoiler type
Return bender	10. < 10mm	2: 2 (tubes)	Null: standard	E:
TBSC:	20. < 20mm	3: 3 (tubes)	(diameter <10, pitch < 30)	Motorized decoiler
Multi-functional return bender	9.52: 9.52mm	5: 5 (tubes)	(diameter <20, pitch < 50)	Q:
			60: customization (pitch > 50)	Eye-to-sky decoiler
				P:
				Passive decoiler



QXU9.52-3



Vibrating plate to load ring



QXU9.52-3

TH7-8M/21



Copper ring



Aluminum ring

Washing Machine of small U

QXU9.52-3



Products

Heat exchanger processing equipments

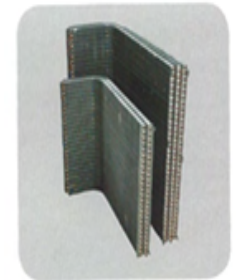


OPTION TBSU: TBSC

TBSU	Max process tube diameter	Number of tube Process at one time	Max pitch	Decoiler type
Return bender	10. < 10mm	2: 2 (tubes)	Null: standard	E:
TBSC:	20. < 20mm	3: 3 (tubes)	(diameter <10, pitch < 30)	Motorized decoiler
Multi-functional return bender	9.52: 9.52mm	5: 5 (tubes)	(diameter <20, pitch < 50)	Q:
			60: customization (pitch > 50)	Eye-to-sky decoiler
				P:
				Passive decoiler



CDBM-1500/3C



Finished coils



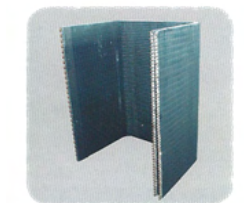
CDBM-1500/



Finished coils



CDBM-1200/2F-HL



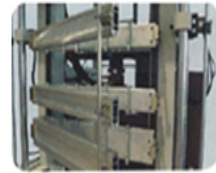
Finished coils

Products

Tube expanders



CME7-53*
4/1600L4



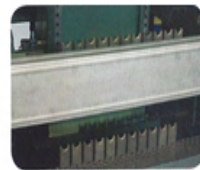
With manual door
To load coil



CMED7-65*
4/1200L2R



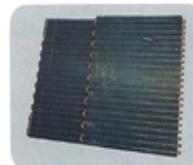
With turn-over
door To load coil



High-low row coil



CMEQ7-43*4/1
200L4A



High low row
U-receiver

OPTION CME: CMEQ CME:

Tube expander	Tube diameter		Max process coil height	Strength direction	Process side	Coil-loading type
CMEQ:	7mm	Pattern type	1200mm 1800mm	L:	1:	Null: normal (manual door)
Shrinkless expander with clamping feature	9.52m m	(holes x lines)	1300mm 2200mm	Vertical types	Single side	R:
		1500mm 2500mm	W:	2:	Rotary table (height ≤ 1600m m)
	15.88m m		1600mm 2700mm	Horizontal type	Double sides	F:
					A:	Turnover-door
					combination	



CME
7.94-40*10/2500
L1FQGLBA



CME
9.52-46*6/2500
L1F



Automatic
selection of
expansion rod



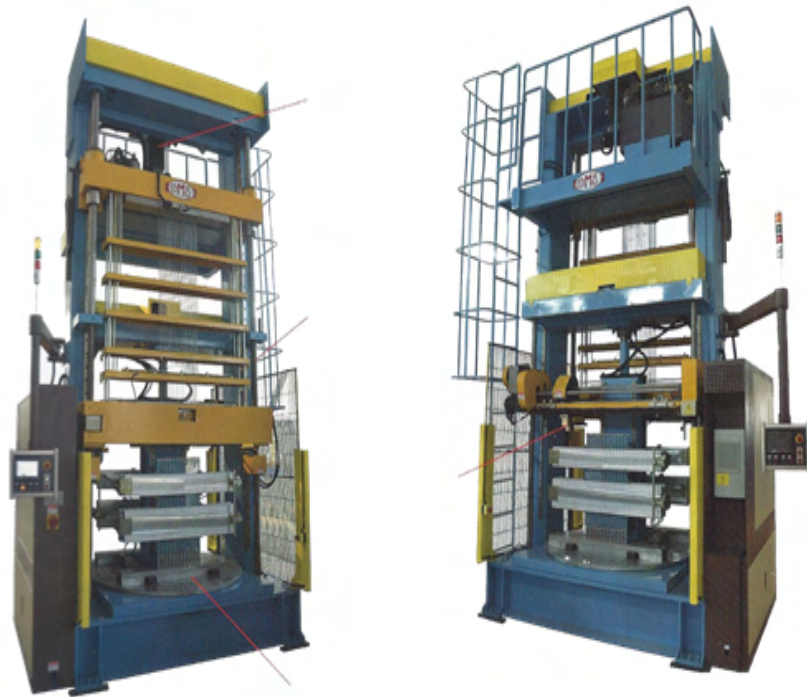
Back door panel
(auto adjusting
height & position)



Front door panel
(auto adjusting
height & position)

Products

Shrinkless expander with clamping fixture



CMEQ9.92-36*3/1200L2R



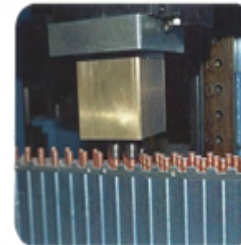
Two-position rotatable table



U shape lock



Upper collet



Scanning flaring

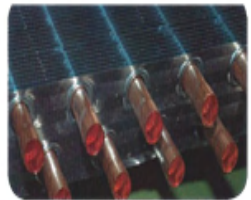
Advantage: The new type tube expander can save copper tube by 2.5% ~ 3% & energy up to 50%

Products

Horizontal combined expander



CME9.52-12*1/4000WA



Capable of processing oval tube coils

OPTION CME: CMEQ CMEQ:

Tube expander	Tube diameter		Max process coil height	Strength direction	Process side	Coil-loading type
CMEQ:	7mm	Pattern type	2200mm	W:	1:	Null: normal (manual door)
Shrinkless expander with clamping feature	9.52mm	(holes x lines)	2700mm	Horizontal type	Single side	R:
		3200mm		2:	Rotary table (height ≤ 1600mm)
	15.88mm		4000mm		Double sides	F:
			5000mm		A:	Turnover-door
			6000mm		combination	

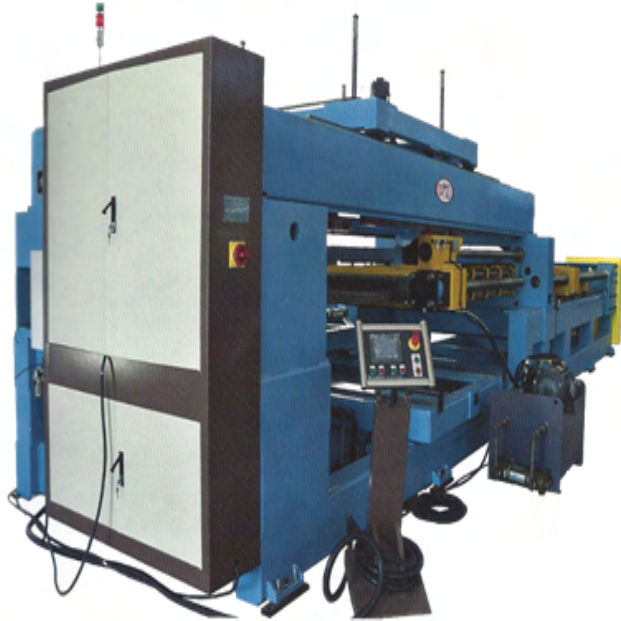
CMEQ9.52-10*1/3000WA



ELASTICITY COLLET

Products

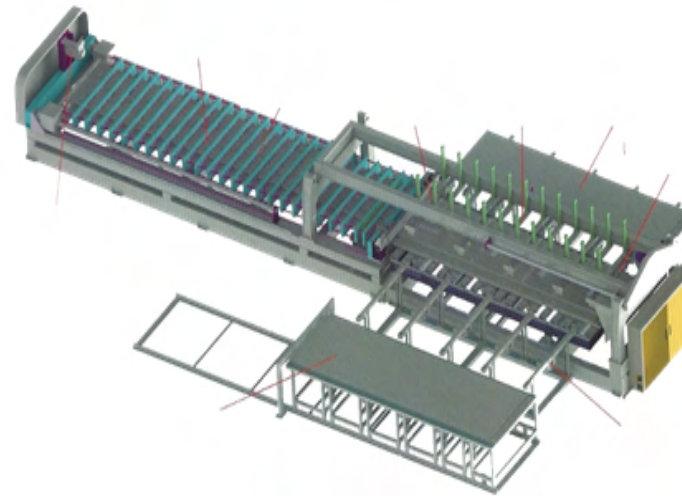
Horizontal combined expander



CME7-64*5/3200W1F



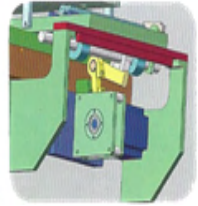
Automatic conveyor table



CMEQ7.94-64*8/5000W1QA

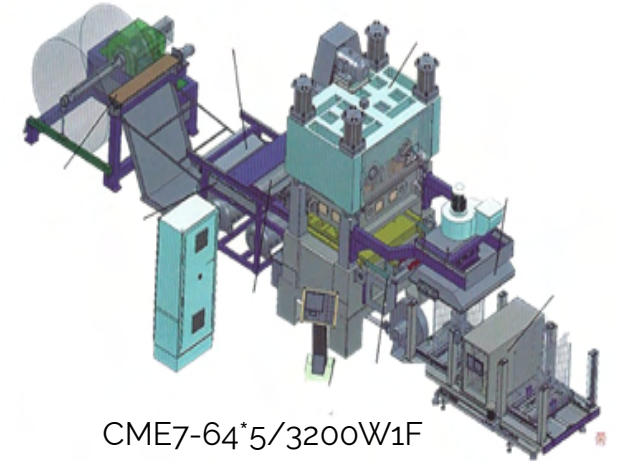
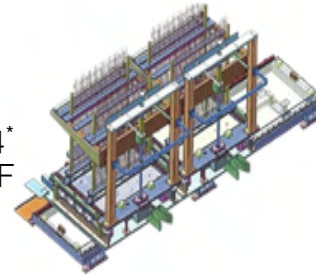
Products

Fin Presser



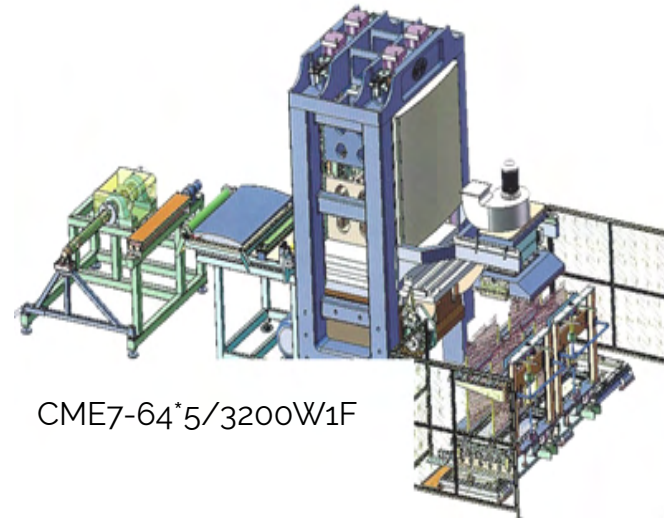
CME7-64*
5/3200W1F

CME7-64*
5/3200W1F



CME7-64*5/3200W1F

OPTION			
HFL:	KN:		N:
	Capacity	Fins stacker type	R: (rotating stacker)
	630: (ton)	1: (stacker trolley)	P" (shifting stacker)
	1250: 125 (ton)	2: 2 (two-positon)	C: (cart stacker)
		3: (three-positon)	



CME7-64*5/3200W1F

CME7-64*5/3200W1F



ALYTA
International Corp.



01. Ruben A Mancilla
VP Ventas Nacionales

Email:

rmancilla@alytamexico.com

Tel: +52 (81) 1577 -3079
(Disponible en Whatsapp)

02. Alex Garcia
Ventas Nacionales &
Internacionales

Email:

agarcia@alytainternational.com
agarcia@alytamexico.com

Tel: (Mexico):
+52 (81) 8421 -7496 (Skype Oficina)
Tel: (USA) +1 (972) 978 -1980
(Disponible en Whatsapp)

03. Norma L Montoya
Oficinas & Administracion

Email:

nmontoya@alytamexico.com

Tel: +52 (81) 8139 -5146 (Oficina)

WWW.ALYTAINTERNATIONAL.COM

WWW.ALYTAMEXICO.COM

- CONTACTANOS -



ALYTA
International Corp.

WWW.ALYTAINTERNATIONAL.COM

WWW.ALYTAMEXICO.COM



ALYTA
Specialty Products de Mexico SA de CV